

FRONTCLAD

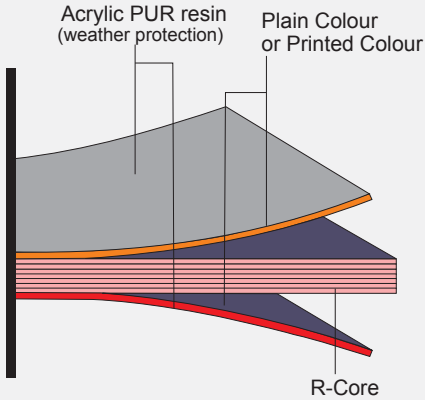
The Art of Green Facade



FRONTCLAD
The Art of Green Facade

GO GREEN!!
NEW EDGE HPL FACADE

PRODUCT INFORMATION



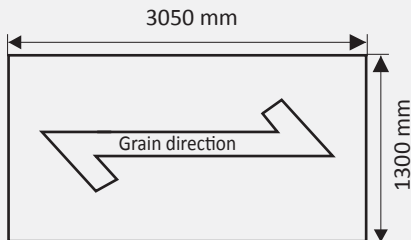
What is Frontclad Panel

Frontclad Panel are High Pressure Laminate wall cladding Panel. Its Exterior Grade Decorative Panel fade resistance Weather-proof & Standard EN-438- 6. Its used to Outdoor Cladding Balcony, Walls Cladding, Main Gate, Canopy, Wall Railing.

Frontclad is made for High Pressure Machine Press all Material Upper Layer UV Acrylic Layer, Melamine Treated Paper, Phenol Resin Kraft Paper Both Side Decorative Layer.

QUALITIES

- | Weather Proof
- | Resistance Atmospheric Conditions
- | Scratch Proof
- | Suitable for Outdoor Application
- | Decorative- Wooden, Stone, metallic, mat and gloss finish
- | Self Supporting
- | Easy to Install
- | Heat Resistance
- | Easy to Clean
- | Easy to Care & Repair
- | Fire Proof



Frontclad Panel Size

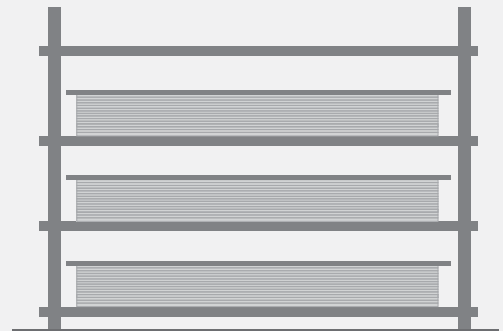
2440 x 1300 x 6mm
Standard Thickness- 6mm
On Demand Thickness- 8 to 20mm

Frontclad Handling & Storages

Fronclad panel should be parallel to each sheet from all corners/Sides. Frontclad panel should be covering from Plastic Tarpaulin cover. Loading & Unloading all panels lifting Horizontally Position We are Stock in Godown Avoid Sunlight, Rain, & High Humidity.

Cleaning & Maintenance

The Protective film applied at sheet. We installed sheet after immediately removed. Customer clean of panels dust over the time to time. It's necessary to clean their panel surfaces with soapy water for better aesthetic over time.



WOODEN DECOR

(*) NEW ARRIVAL



RC - 9310*



RC - 9318*



RC - 9322



RC - 9327



RC - 9328



RC - 9333



RC - 9334



RC - 9353



RC - 9357*

WOODEN DECOR

(*) NEW ARRIVAL



RC - 9359*



RC - 9367



RC - 9368



RC - 9369



RC - 9371*



RC - 9388



RC - 9391*

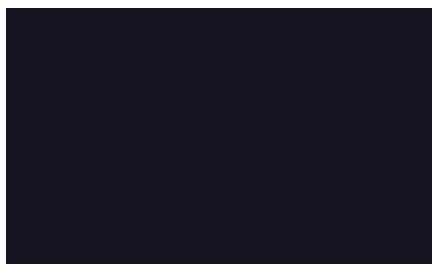


RC - 9393*



RC - 9397*

COLOURS



MDI SOLID1201 BLACK



MDI SOLID1202 PREMIUM BLUE



MDI SOLID1203 BLUE



MDI SOLID1204 RED



MDI SOLID1205 OFF RED



MDI SOLID1206 GREEN



MDI SOLID1207 TAFFY PINK



MDI SOLID1208 PREMIUM RED



MDI SOLID1209 DARK YELLOW



MDI SOLID1210 OFF GREEN



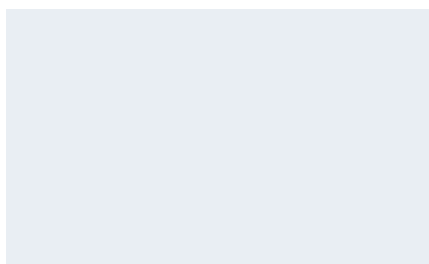
MDI SOLID1211 GREY



MDI SOLID1212 LITE YELLOW



MDI SOLID1213 PREMIUM GREY



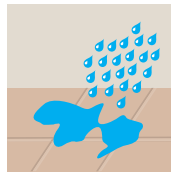
MDI SOLID1214 WINTER WHITE



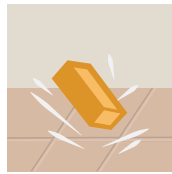
MDI SOLID1215 FROSTY WHITE



EASY TO CLEAN



MOISTURE RESISTANCE



STRIKE RESISTANCE



CHEMICAL EFFECTS RESISTANCE



ABRASSION RESISTANCE



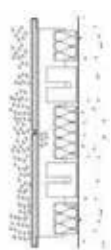
HIGH HEAT AND FIRE RESISTANCE

Sl. No	PROPERTIES	TEST METHOD	ATTRIBUTES OF PERFORMANCE	UNIT OF MEASUREMENT	RESULTS (AS PER EN438-6)
1 SURFACE QUALITY					
1.1	Surface quality	EN 438-2.4	Spots, dirt and similar surface	mm ² /m ²	≤ 2
			Fibres, hairs and scratches	mm ² /m ²	≤ 20
2 DIMENSIONAL PROPERTIES					
2.1	Thickness	EN 438-2.5	Thickness tolerance	mm	5 ≤ T < 8: ± 0,4
2.2	Size	EN 438-2.6	Length and Width	mm	+10/-0
2.3	Straightness of edge	EN 438-2.7	Straightness of edges	mm/m	≤ 1,5
2.4	Squareness	EN 438-2.8	Squareness	mm/m	≤ 1,5
2.5	Flatness	EN 438-2.9	Flatness (measured on full-size sheet)	mm/m	6.0 ≤ T < 10,0: 5
3 PHYSICAL PROPERTIES					
3.1	Flexual Modulus	EN ISO 1 78	Stress	Mpa	≥ 9000
3.2	Flexual Strength	EN ISO 1 78	Stress	Mpa	≥ 80
3.3	Tensile Strength	EN ISO 527-2	Stress	Mpa	≥ 60
3.4	Density	EN ISO 1183	Density	gm/cm ³	≥ 1,35
3.5	Resistance to impact with large diameter bill	EN 438-2.21	Indent dia.10mm 2 ≤ T < 6mm Drop Height	min.	≥ 1400
			Indent dia.10mm T ≥ 6mm - Drop Height	min.	≥ 1800
3.6	Resistance to Wet Conditions	EN 438-2.15	Mass increase - 2 ≤ T < 5mm	max. %	EGS- ≤ 7, EGF- ≤ 10
			Mass increase - T ≥ 5mm	max. %	EGS- ≤ 5, EGF- ≤ 8
			Appearance	Rating	≥ 4
3.7	Dimensional stability at elavated temperatures	EN 438-2.17	Cumulative dimensional change - 2 ≤ T < 5mm	Longitudinal %	≤ 0.40
				Transversal %	≤ 0.80
			Cumulative dimensional change - T ≥ 5mm	Longitudinal %	≤ 0.30
				Transversal %	≤ 0.60
4 WEATHER RESISTANCE REQUIREMENTS					
4.1	Resistance to Climatic Shock	EN 438-2.19	Thermal Shock Resistance- Appearance	Rating	≥ 4
4.2	Resistance to Artifical Weathring	EN 438-2.29	Contrast	Grey scale rating	≥ 3
			Appearance	Rating	≥ 4
5 FIRE PERFORMANCES					
5.1	Fire Reaction Classification	EN 135 01	Test as per EN 13823 (SBI test) and EN ISO 11925 -2 (Small-burner test)		
			Classification - 3 ≤ T < 6mm	Classification	B-s2, d0
			Classification - 6 ≤ T < 13mm	Classification	B-s1, d0

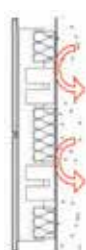
Breathable facade for healthier buildings- Reznoclad HPL is highly suited for ventilated facade systems.



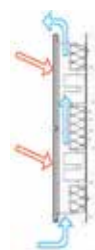
PERMEABILITY



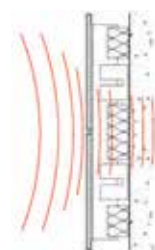
WATER PROTECTION



THERMAL INSULATION
(Elemenation of Heat Bridge)



SOLAR PROTECTION



ACOUSTIC PROTECTION

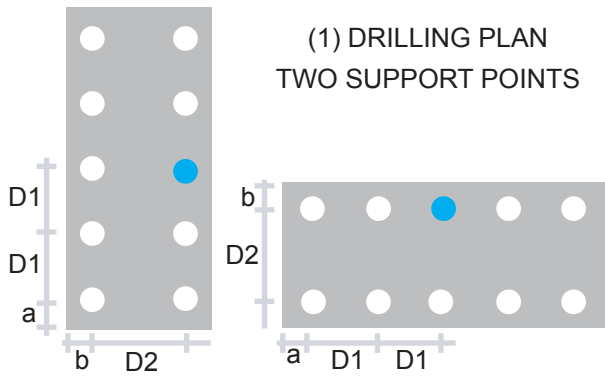
OUR PROJECTS



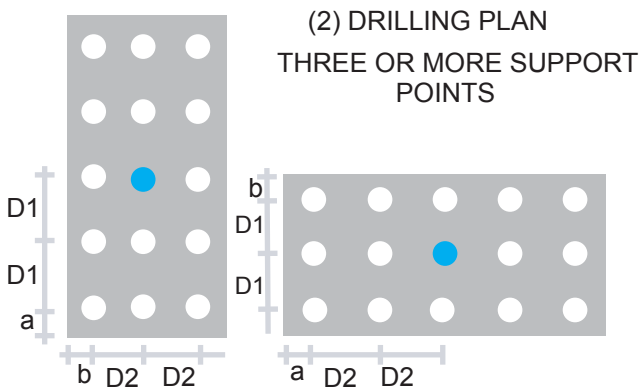
ENVIRONMENT

Frontclad is committed to continuous improvement of environmental performances. These panels are not hazardous to health and does not pollute the environment. It is made up of 70% cellulose fibers and 30% thermosetting resins and does not contain asbestos or heavy metals. These panels does not emit gases, fumes, solvents or liquid substances

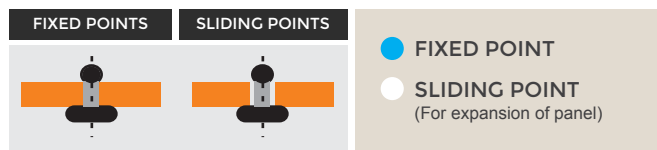
INSTALLATION SYSTEM



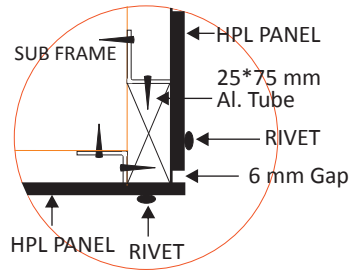
Thickness (mm)	MAX D1 (mm)	MAX D2 (mm)	a (mm)	b (mm)
6	500	500	20-80	20-40
8	650	650	20-80	20-40
10	800	800	20-90	20-50



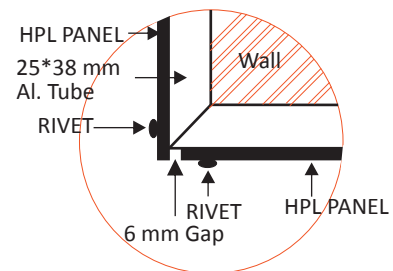
Thickness (mm)	MAX D1 (mm)	MAX D2 (mm)	a (mm)	b (mm)
6	550	550	20-80	20-40
8	700	700	20-80	20-40
10	950	950	20-90	20-60



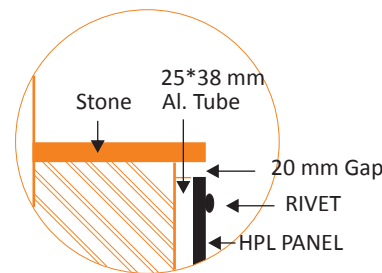
FIXING DETAILS



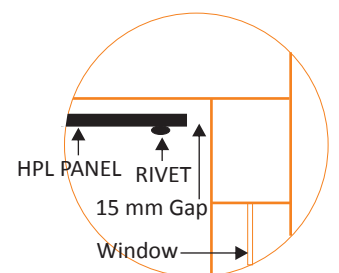
DETAIL VERTICAL CORNER



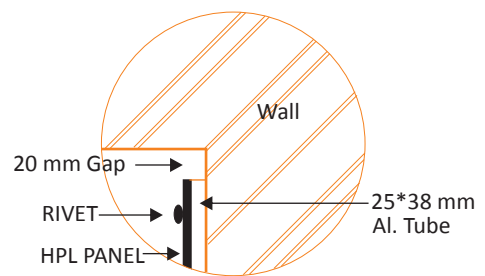
DETAIL HORIZONTAL DROP



DETAIL TOP STONE PARAPET



DETAIL INSIDE CORNER



CEILING JOINT



AUTHORISED DEALER

FRONTCLAD

The Art of Green Facade